



Society for the Preservation of Greek Housing NEWSLETTER

Volume 2, Number 2 Spring 1996

Board of Directors

Joe Miller
President

Carol Miles
Vice President

Stasz Gorski
Secretary

Duane Frichtl
Treasurer

Karen Lang Kummer
Rod Reid
Wynn Smiley
Bonnie Sprague
Jeff Tock
Dianne Todd

Society Committee
Chairpersons

Stasz Gorski
Fundraising

Ellen Garrett Colfax
Education Programs

Rod Reid
Program
Implementation

Greg Hargus
Preservation

Newsletter Editor
Ellen Garrett Colfax

OPEN HOUSE/ HOUSE WALK

On Sunday April 14 the Society held its first Open House/House Walk, which featured the eight Greek chapter houses on the U of I campus that are listed on the National Register of Historic Places. Seven of these houses participated in the walk. The event was held during the University-designated Mom's Day Weekend, so that visiting parents and alumni could also tour the historic houses. Officers and members of the chapters were on hand to lead tours and answer questions. Information booklets describing the historic architectural features of the houses as well as a brief history of each chapter were available at the houses.

The houses included in the event were:

Sorority -

Alpha Xi Delta
715 W. Michigan
Urbana

Fraternities -

Alpha Delta Phi
310 E. John
Champaign

Beta Sigma Psi
706 W. Ohio
Urbana

Beta Theta Pi
202 E. Daniel
Champaign

Delta Upsilon
312 E. Armory
Champaign

Kappa Delta Rho
1110 S. Second
Champaign

Sigma Alpha Epsilon
211 E. Daniel
Champaign

The Society thanks the chapter presidents and those who helped in setting up refreshments and guiding visitors through the houses, for the time, work and planning they contributed to this event.

The News-Gazette ran a story about the Walk on Monday April 15 and included a photo of Alpha Delta Phi's grand living room.

The Society anticipates holding another Open House/House Walk in the Fall, featuring a few houses which have completed extensive restorations.

PROGRAM IMPLEMENTATION COMMITTEE

Sigma Chi

The restoration and renovation work on the Sigma Chi chapter house is three-quarters of the way complete.

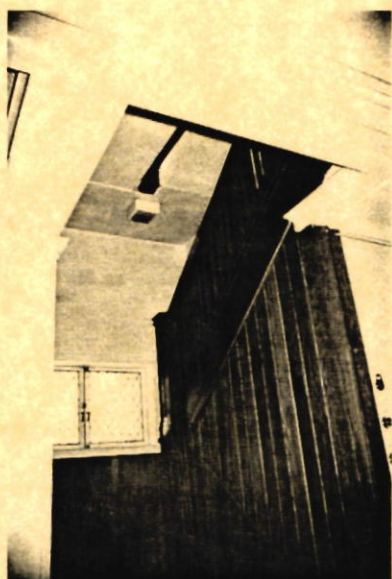
Although the work continues, some impressive before and after photos have been submitted to give everyone an idea of what has been done. The project will be complete by early summer.



Before: The front entrance as it had been since changes were made in the sixties.



After: The design of the original front porch has been followed in reconstructing the front entrance.



Before: The stairway had carpeting and the banister, railing and newel post were painted. The leaded glass, although pretty, is not original to the house.



After: The stairway's oak woodwork has been uncovered and refinished. The window has been replaced with the original type of sixteen-paned window consistent with the other windows of the house.



Before: A bedroom.



After: The bedroom has been transformed. A new window with oak trim replaces the door, a new heating register has been installed at the baseboard, and an oak chair rail has been added.

Several chapters are in the process of submitting grant applications for various restoration and life/safety upgrade work that has already begun. **Alpha Gamma Delta** is having tuck pointing work done on the exterior of their house and is planning to install a new heating system. **Phi Kappa Sigma** is working on a master plan for improvements, including a life/safety upgrade, providing better means of egress from the building and the installation of a new electrical system. The exterior of **Alpha Rho Chi** is being painted in the historic color scheme, and other work has begun with repairs to the clay tile roof and a minor energy upgrade for the house. **Psi Upsilon** has met fire protection requirements with the installation of sprinklers throughout the house, three new fire escape

stairs and one new fire exit in the dining room.

COMPILING YOUR CHAPTER'S HISTORY

A call for chapter history papers was given for the 1996 Spring semester. A call for histories will be made each semester.

Guidelines are available for anyone interested in compiling a history of their chapter. Please call Ellen Colfax at 384-6373 for copies of the guidelines. Chapter presidents, chapter historians, and/or pledge educators might plan for this to be a pledge class project. An honorarium of \$100 will be granted for each acceptable history submitted, one honorarium per house. An additional prize of \$100 will be awarded for the history judged best of those submitted that semester. Officials of the Society will be the judges.

Once a chapter history has been awarded a grant, further histories are not eligible for grant awards for a period of ten years.

Copies of the chapter histories will be deposited with the University Archives. Chapters are encouraged to deposit in the Archives any source materials (or copies thereof), located for the writing of the history.

SERVING ON THE SPGH BOARD

If you care about preserving historic Greek chapter houses and might be interested in serving on the Board or as an advisor, the Society welcomes you to attend our monthly meetings. We meet the second Thursday of every month at 4:30pm. Please call Ellen Colfax at 384-6373 for more information if you would like to attend the next meeting.

THE TREASURER'S REPORT

The Society's current balance is \$55,174.51 which includes \$28,377.17 member designated funds and \$26,797.34 working funds.

Since September 1994 when the first grant was issued, grants for approved projects have totaled \$470,322.11.

SPGH HOMEPAGE

The Society's has a new homepage. The address is <http://www.soltec.com/spgh> Information about the Society is included in it and it will be updated periodically with info and photos from current chapter restoration projects.

SPGH ORGANIZATIONAL MEMBERS

ΑΔΦ

ΑΓΔ

ΑΟΠ

ΑΡΧ

ΑΤΩ

ΑΞΔ

ΒΣΨ

ΒΘΠ

ΧΩ

ΔΦ

ΔΤΔ

ΔΖ

Farmhouse

ΓΦΒ

ΚΑΘ

ΚΚΓ

ΚΣ

ΛΧΑ

ΦΚΨ

ΦΚΤ

ΦΜ

ΦΣΣ

ΨΥ

ΣΧ

ΣΔΤ

ΣΝ

ΣΦΔ

ΣΤΓ

ΘΞ

Triangle

ZBT

SPGH

Society for the
Preservation
of Greek Housing
PO Box 2765
Champaign, IL 61825-2765



Heather Parmelee
52 E. Armory, #125
Champaign, IL 61820

PARM052 618204044 1696 06/17/96
RETURN TO SENDER
PARMELEE
MOVED LEFT NO ADDRESS
UNABLE TO FORWARD
RETURN TO SENDER

