

Society for the  
Preservation of  
Greek Housing  
PO Box 2764  
Champaign, IL 61825-2764

SPGH



---

**SOCIETY FOR THE PRESERVATION  
OF GREEK HOUSING**

# **NEWSLETTER**

*Volume 5, June, 2001*

---



## **Greek House Becomes Historical Place**

The Sigma chapter house of Alpha Delta Pi at 1202 West Nevada in Urbana, Illinois is the latest Greek chapter house to become a site on the National Register of Historic Places. The chapter house was constructed in 1926 and was designed by the architectural firm of Clare-Alban W. Coen Company of Berwyn, Illinois; it was designed as a two-and one-half story brick building with qualities of the French Eclectic architectural style.

The house is an asymmetrically-shaped rectangular

*(con't on back)*

All of the above information is contained in the nomination form for the sorority and is used with the consent of the author, Karen Lang-Kummer to whom The newsletter is indebted for the information.

Karen Lang-Kummer, president of the Society for the Preservation of Greek Housing; Cara Augspurger, SPGH board member and Alpha Delta Pi house corporation member; and Terri Dodson, executive director of SPGH presented an SPGH plaque recognizing the National Register of Historic Places designation to the Sigma chapter members in a ceremony on Sunday, April 29<sup>th</sup>. The sorority will find a suitable secure plan to display their bronze plaque.

## Illinois Hires Greek Coordinator

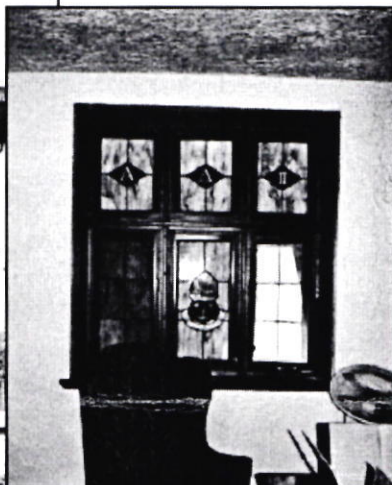
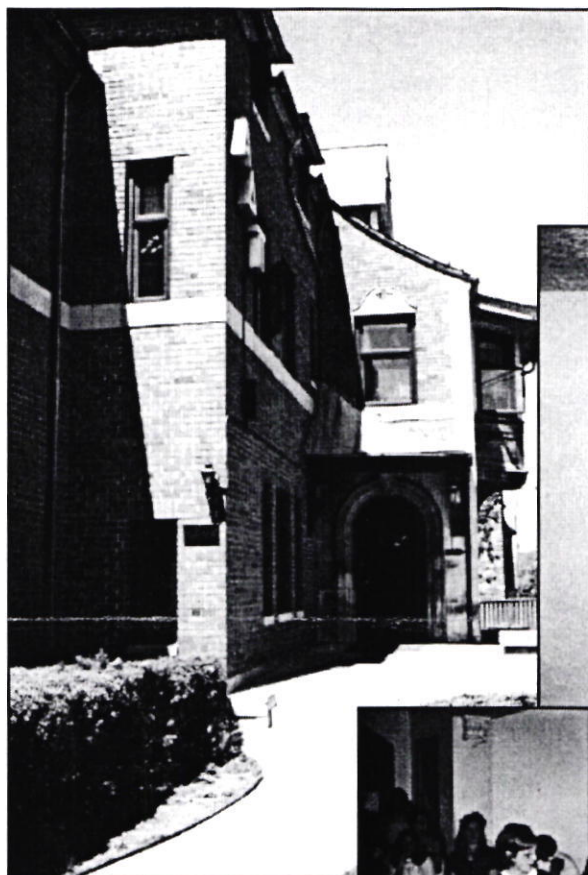
The new Co-ordinator of Greek Affairs has been hired and will be at work in July. He is Dan Bureau and he is coming to the university from the University of New Mexico where he held the same position. Lisa Ruster who served as interim in the co-ordinator position is attending graduate school at Illinois and will be working part-time in the Greek Affairs office. Our thanks to the search committee for all their hard work filling this position. Many thanks also to Lisa Ruster who has served

so ably in her interim position and who has regularly attended the SPGH board meetings and been of invaluable assistance to this organization.

John Coit, a graduate student in History, working at Student-Life Archives, has finished the Delta Tau Delta chapter history for the Illinois chapter. This summer he will be working on Chi Omega at Illinois as the chapter has been active at the U of I for 100 years. Also, Chi Omega will be the first sorority to have SPGH do their chapter's history. **If your chapter is a member in good standing of the organization, the chapter is eligible to have it's history written by the graduate student employed through the Society for writing chapter histories.** So far, FarmHouse, Delta Tau Delta and now Chi Omega have availed themselves of this service.

## Dues

**The Board of the Society for the Preservation of Greek Housing would like to thank those members who have paid their dues in a prompt manner and remind those who have yet to pay dues that we will still receive them.**



building with steep intersecting slate jerkin-head and hip roofs. An entrance pavilion projects from the northeast corner of the center block and has a cat slide roof that is continuous with the main hip roof; the entrance door faces south. The recessed entry has a wood round-arch door with an eye level round window that is set in a round-arch limestone architrave accented with stone. A standing-seam copper hood is inset into the corner sheltering the entrance and is supported by two large ornate wooden molded braces and beams.

The reception area of the chapter house across the foyer from the entry has blue stained glass windows with the Greek letters for Alpha Delta and Pi, a letter in each pane of the triple transom and the lower sash has the sorority crest, a very striking site as one enters the chapter house.

A description of the proposed chapter house from the sorority's newsletter *The Sigmagram* of 1926 reads:

*"The house will be of typical French chateau-style unlike any fraternity or sorority house on the campus at the present time. It is to be built of a medium yellow-buff, smooth surfaced brick. The bank course just below the second floor windows, quoins, chimney cap and trim around the south door are to be trimmed in buff Bedford stone. This door which will be the main entry will be massive( almost medieval in type) with wrought iron strap hinges and a wrought iron grill over a small round window..."*